

SPIICE Model – 1812PS

This lumped-element (SPIICE) model data simulates the frequency-dependent behavior of Coilcraft ferrite surface mount inductors within the frequency range shown in the accompanying table.

The equivalent lumped element model schematic is shown below. The element values R1, R2, C, L, k1 and k2 are listed in the table for each component value. The value of the frequency-dependent variable resistor R_{VAR1} relates to the skin effect and is calculated from:

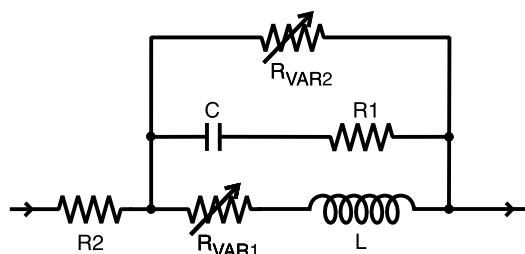
$$R_{VAR1} = k1 * \sqrt{f}$$

- k1 is shown for each value in the accompanying table.
- f is the frequency in Hz

The value of the frequency-dependent variable resistor R_{VAR2} relates to core losses and is calculated from:

$$R_{VAR2} = k2 * \sqrt{f}$$

- k2 is shown for each value in the accompanying table.
- f is the frequency in Hz



The data represents de-embedded measurements, as described below. Effects due to different customer circuit board traces, board materials, ground planes or interactions with other components are not included and can have a significant effect when comparing the simulation to measurements of the inductors using typical production verification instruments and fixtures.

Each model should only be analyzed at the input and output ports. Individual elements of the model are not determined by parameter measurement. The elements are determined by the overall performance of the lumped

element model compared to the measurements taken of the component.

Typically, the Self-Resonant Frequency (SRF) of the component model will be higher than the measurement of the component mounted on a circuit board. The parasitic reactive elements of a circuit board or fixture will effectively lower the circuit resonant frequency, especially for very small inductance values. Since data sheet specifications are based on typical production measurements, and the SPIICE models are based on de-embedded measurements as described below, the model results may be different from the data sheet specifications.

Lumped Element Modeling Method

Measurements were made using a 50 Ohm Agilent/HP 4395A impedance analyzer with an Agilent/HP 16193 test fixture. Calibration was performed using open/short/load standards. Fixture compensation was performed using open and short standards.

The lumped element values were determined by matching the simulation model to an average of the measurements. This method results in a model that represents as closely as possible the typical frequency-dependent behavior of the component within the model frequency range.

The lumped element models were used to generate our 2-port S-parameters and therefore give identical results. The S-parameters are available on our web site at <http://www.coilcraft.com/models.cfm>.

Disclaimer

Coilcraft makes every attempt to provide accurate measurement data and software, representative of our components, in a usable format. Coilcraft, however, disclaims all warrants relating to the use of its data and software, whether expressed or implied, including without limitation any implied warranties of merchantability or fitness for a particular purpose. Coilcraft cannot and will not be liable for any special, incidental, consequential, indirect or similar damages occurring with the use of the data and/ or software.

Coilcraft[®]

Specifications subject to change without notice. Document 298-1 Revised 11/13/02

1102 Silver Lake Road Cary, Illinois 60013 Phone 847/639-6400 Fax 847/639-1469

E-mail info@coilcraft.com Web <http://www.coilcraft.com>

SPICE Model for Coilcraft 1812PS Power Inductors

Part number	Frequency limit of model (MHz)		R1	R2	C (pF)	L (μH)	k1	k2
	Lower	Upper						
1812PS-102M	0.1	300	608	0.054	137	1.0	7.60E-07	2.29
1812PS-152M	0.1	60	840	0.054	93	1.5	3.75E-07	1.25
1812PS-222M	0.1	60	1600	0.072	93	2.2	7.50E-07	1.89
1812PS-272M	0.1	55	1540	0.072	79	2.7	7.50E-07	1.89
1812PS-332M	0.1	50	1690	0.120	107	3.3	8.53E-07	3.56
1812PS-392M	0.1	50	2630	0.104	103	3.9	2.30E-05	4.21
1812PS-472M	0.1	50	3320	0.095	37.5	4.7	4.50E-05	3.31
1812PS-562M	0.1	45	3160	0.097	152	5.6	5.68E-05	7.35
1812PS-682M	0.1	40	3910	0.124	206	6.8	1.48E-05	8.05
1812PS-103M	0.1	40	6080	0.154	273	10	2.96E-05	32.2
1812PS-153M	0.1	35	8370	0.326	137	15	1.00E-07	33.7
1812PS-223M	0.1	25	7160	0.314	0.615	22	3.98E-07	11.2
1812PS-333M	0.1	20	4160	0.418	0.903	33	2.38E-07	14.6
1812PS-393M	0.1	20	4640	0.622	0.763	39	2.38E-07	18.6
1812PS-473M	0.1	18	5110	0.883	0.833	47	1.51E-04	31.8
1812PS-683M	0.1	13	2090	1.19	1.47	68	3.50E-05	37.9
1812PS-823M	0.1	11	4010	1.24	1.38	82	3.50E-05	59.9
1812PS-104M	0.1	11	2390	1.39	1.40	100	1.75E-05	71.1
1812PS-124M	0.1	9.0	2660	1.39	1.74	120	1.49E-05	76.9
1812PS-154M	0.1	8.0	1650	1.97	2.12	150	2.51E-05	108
1812PS-224M	0.1	6.0	1060	2.61	2.63	220	6.77E-05	139
1812PS-334M	0.1	4.0	1280	4.08	2.36	330	1.23E-04	231
1812PS-474M	0.1	3.0	1180	5.28	2.99	470	7.20E-05	342
1812PS-564M	0.1	1.5	1040	6.61	5.86	560	7.20E-05	342
1812PS-684M	0.1	1.0	1120	6.61	5.30	680	1.02E-04	412
1812PS-824M	0.1	1.0	620	8.41	8.52	818	1.02E-04	388
1812PS-105M	0.1	1.0	674	9.11	11.0	997	1.57E-04	503



Specifications subject to change without notice. Document 298-5 Revised 02/05/03

1102 Silver Lake Road Cary, Illinois 60013 Phone 847/639-6400 Fax 847/639-1469

E-mail info@coilcraft.com Web <http://www.coilcraft.com>