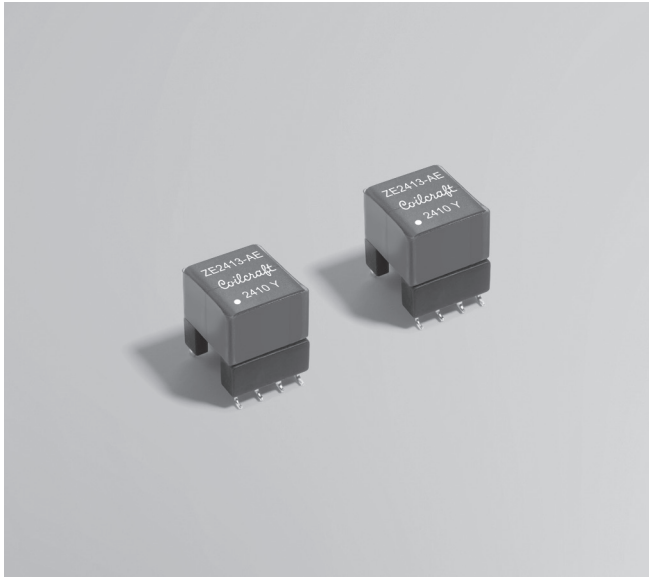


NEW!

Isolated Buck Transformer ZE2413-AE



- Optimized for STMicroelectronics automotive Iso-Buck converter A6986I and L6986I
- Compact footprint, only 11.7 x 10 mm
- Suitable for automotive isolated IGBT/SiC gate driver, On-board charger for HEV/EV, Electric Traction Systems, and similar applications
- 3300 Vrms, one minute isolation (hipot) from primary to secondary
- AEC-Q200 qualified

Core material Ferrite

Terminations RoHS tin-silver over tin over nickel over phos bronze.

Weight 2.4 – 2.7 g

Ambient temperature –40°C to +125°C

Max part temperature +165°C

Storage temperature Component: –40°C to +125°C.

Tape and reel packaging: –40°C to +80°C

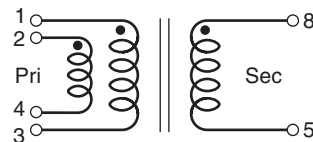
Resistance to soldering heat Max three 40 second reflows at +260°C, parts cooled to room temperature between cycles

Moisture Sensitivity Level (MSL) 1 (unlimited floor life at <30°C / 85% relative humidity)

PCB washing Tested with pure water or alcohol only. For other solvents, see [Doc787_PCB_Washing.pdf](#)

Part number ¹	Inductance at 0 Adc ±10% (µH)	Inductance at 2 Adc ² min (µH)	Isat ³ (A)	DCR max (Ohms)		Leakage Inductance ⁴ max (µH)	Turns ratio pri : sec	Isolation ⁵ (Vrms)	Output
				pri	sec				
ZE2413-AED	18	14	2.6	0.056	0.352	0.18	1 : 2	3300	8 V, 0.20 A

- Packaging:** D = 13" machine-ready reel. EIA-481 embossed plastic tape (200 per full reel). Quantities less than full reel available: in tape (not machine ready) or with leader and trailer (\$25 charge).
 - Inductance is for the primary, measured at 400 kHz, 0.2 Vrms, 2 Adc.
 - DC current that causes the primary inductance to drop 30% from its value without current.
 - Leakage Inductance is for the primary, measured at 400 kHz, 0.2 Vrms with secondary windings shorted together.
 - 3300 Vrms, one minute isolation (hipot) measured between primary and secondary.
 - Electrical specifications at 25°C.
- Refer to Doc 362 "Soldering Surface Mount Components" before soldering.

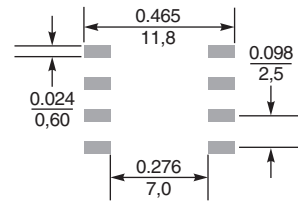
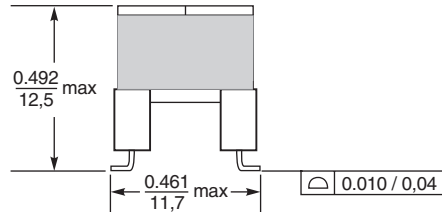
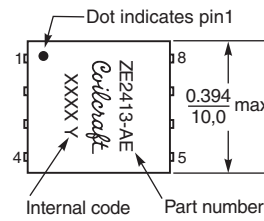
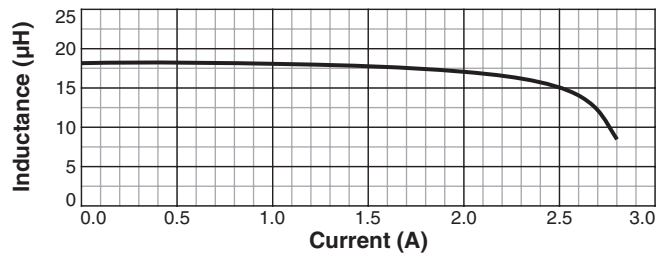


Connect pins 1, 2 and 3,4 to the PC board



ZE2413-AE Series

L vs Current



Recommended Land Pattern

Dimensions are in $\frac{\text{inches}}{\text{mm}}$

Packaging 200/13" reel Plastic tape: 16 mm wide, 0.3 mm thick, 12 mm pocket spacing, 4.3 mm pocket depth