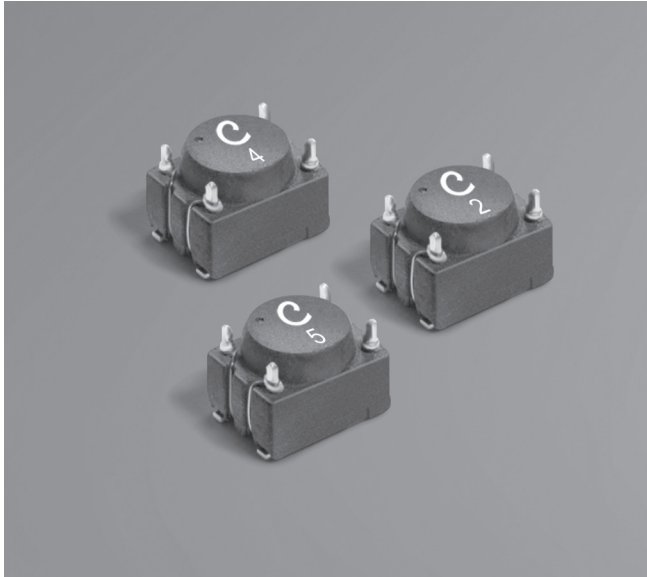


**NEW!**

# SMT Data Line EMI Filters DFT4532



- Current-compensated ring core double choke
- Miniature footprint; less than 3.2 mm tall
- Exceptional common mode noise attenuation
- AEC-Q200 Grade 3 (-40°C to +85°C)
- 250 Vrms, one minute isolation (hipot) between windings

**Core material** Ferrite

**Environmental** RoHS compliant

**Terminations** RoHS compliant matte tin over nickel over phos-bronze

**Weight** 78 – 86 mg

**Ambient temperature** -40°C to +85°C with Irms current

**Maximum part temperature** +105°C (ambient + temp rise)

**Storage temperature** Component: -40°C to +105°C.

Tape and reel packaging: -40°C to +80°C

**Resistance to soldering heat** Max three 40 second reflows at

+260°C, parts cooled to room temperature between cycles

**Moisture Sensitivity** Level (MSL) 1 (unlimited floor life at <30°C / 85% relative humidity)

**Failures in Time (FIT) / Mean Time Between Failures (MTBF)**

38 per billion hours / 26,315,789 hours, calculated per Telcordia SR-332

**Packaging** 600/7" reel; 2000/13" reel Plastic tape: 12 mm wide, 0.4 mm thick, 8 mm pocket spacing, 3.43 mm pocket depth

**PCB washing** Tested to MIL-STD-202 Method 215 plus an additional aqueous wash. See [Doc787\\_PCB\\_Washing.pdf](#).

Part number <sup>1</sup>	Common mode impedance max (kOhms)	Cutoff frequency <sup>2</sup> (MHz)	Inductance <sup>3</sup> (mH)		Test frequency (kHz)	Irms <sup>4</sup> (mA)	DCR (Ohms) <sup>5</sup>		Leakage inductance max (µH)	Value Marking
			nom	min			nom	max		
DFT4532-513BL_	2.01 @ 61 MHz	670	0.051	0.0357	100	370	0.250	0.320	0.100	5
DFT4532-513SL_	1.92 @ 99 MHz	28	0.051	0.0357	100	370	0.250	0.320	1.600	6
DFT4532-104BL_	0.64 @ 9.7 MHz	900	0.100	0.070	100	500	0.150	0.200	0.070	1
DFT4532-224BL_	1.40 @ 13 MHz	650	0.220	0.154	100	400	0.200	0.270	0.080	2
DFT4532-334BL_	1.96 @ 9.6 MHz	520	0.330	0.231	100	370	0.250	0.320	0.100	3
DFT4532-474BL_	3.04 @ 9.6 MHz	490	0.470	0.329	100	350	0.320	0.380	0.130	4

1. When ordering, please specify **termination** and **packaging** code:

**DFT4532-474BLC**

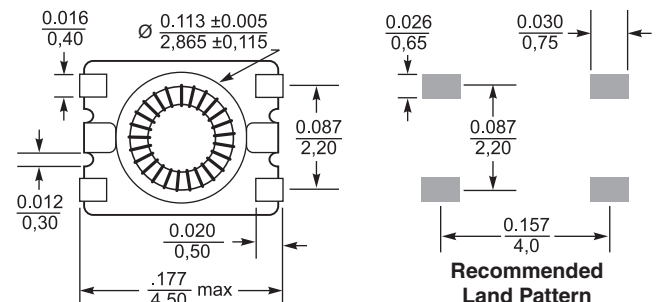
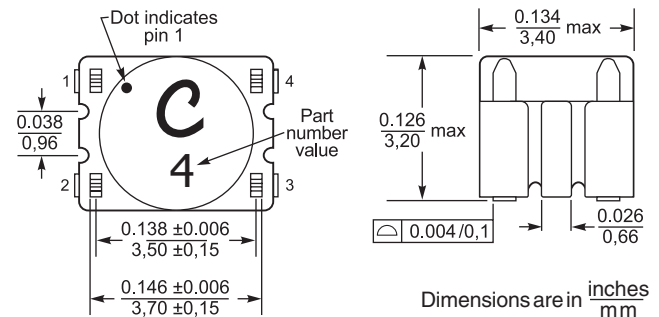
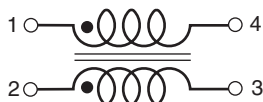
**Termination:** L = RoHS compliant matte tin over nickel over phos-bronze

**Special order, add cost: S** = non-RoHS tin-lead (63/37)

**Packaging:** C = 7" machine-ready reel. EIA-481 embossed plastic tape (600 parts per full reel). Quantities less than full reel available: in tape (not machine ready) or with leader and trailer (\$25 charge)

D = 13" machine-ready reel. EIA-481 embossed plastic tape. Factory order only, not stocked (2000 parts per full reel).

2. Frequency at which the differential mode attenuation equals 3 dB
  3. Inductance is for each winding, measured at test frequency using a Volttech AT3600 or equivalent.
  4. Current that causes a 20°C temperature rise from 25°C ambient.
  5. DCR is specified per winding.
- Refer to Doc 362 "Soldering Surface Mount Components" before soldering.

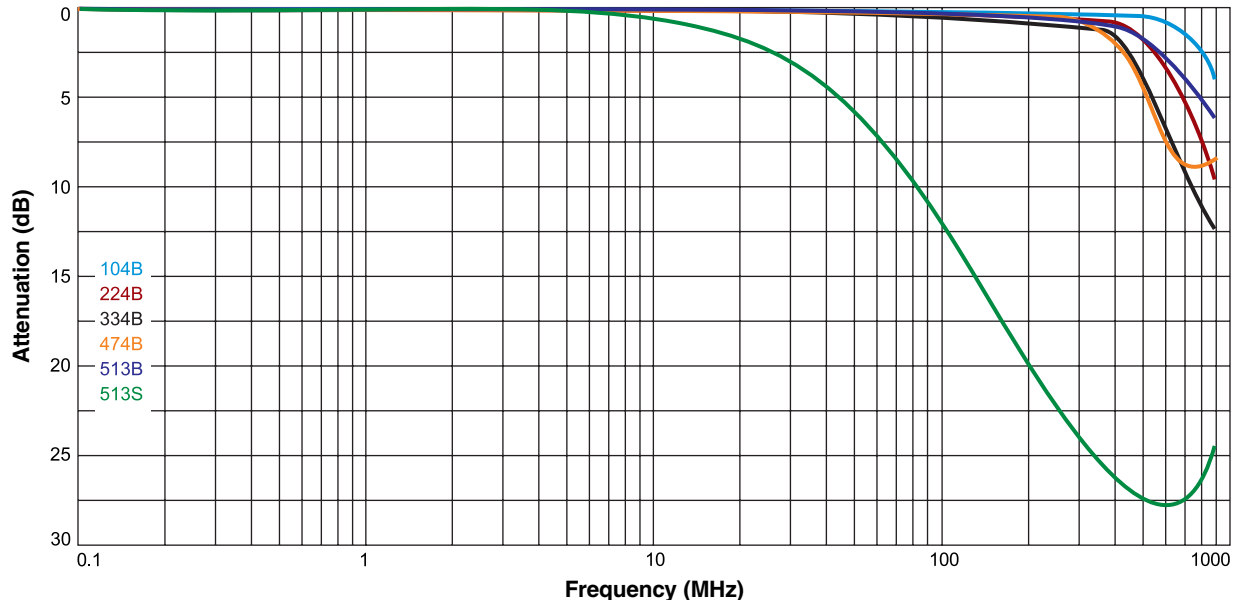




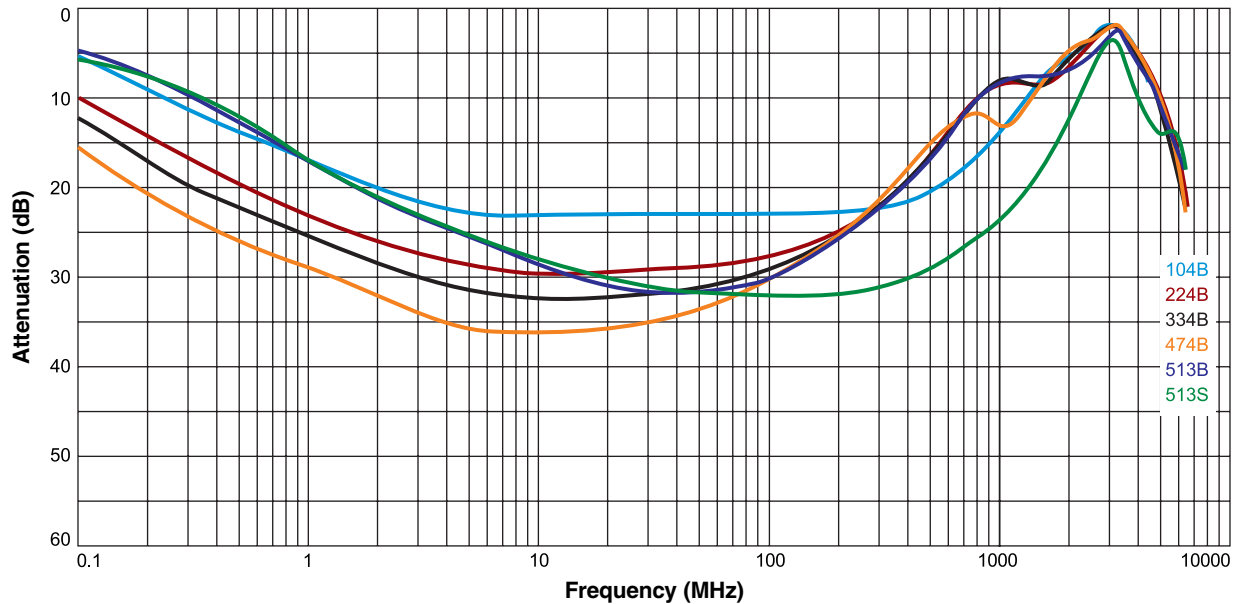
# SMT Data Line EMI Filters – DFT4532

## Attenuation vs Frequency

### Differential Mode



### Common Mode



**US** +1-847-639-6400 sales@coilcraft.com  
**UK** +44-1236-730595 sales@coilcraft-europe.com  
**Taiwan** +886-2-2264 3646 sales@coilcraft.com.tw  
**China** +86-21-6218 8074 sales@coilcraft.com.cn  
**Singapore** + 65-6484 8412 sales@coilcraft.com.sg

Document 1495-2 06/21/19

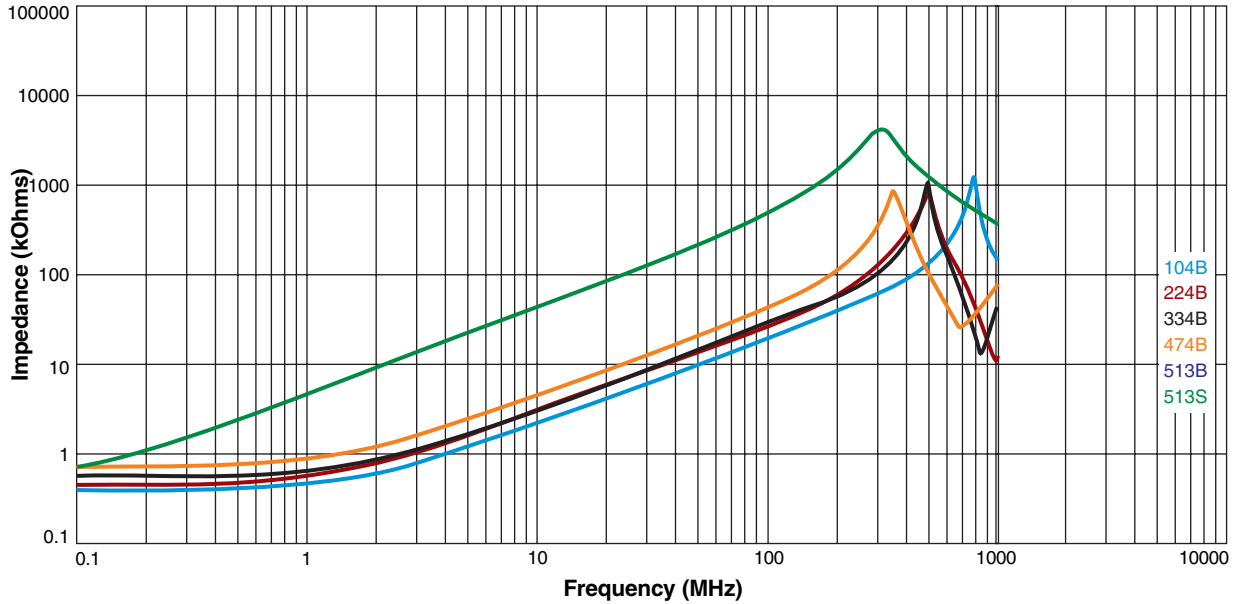
© Coilcraft Inc. 2019  
 This product may not be used in medical or high risk applications without prior Coilcraft approval. Specification subject to change without notice. Please check web site for latest information.



# SMT Data Line EMI Filters – DFT4532

## Impedance vs Frequency

### Differential Mode



### Common Mode

