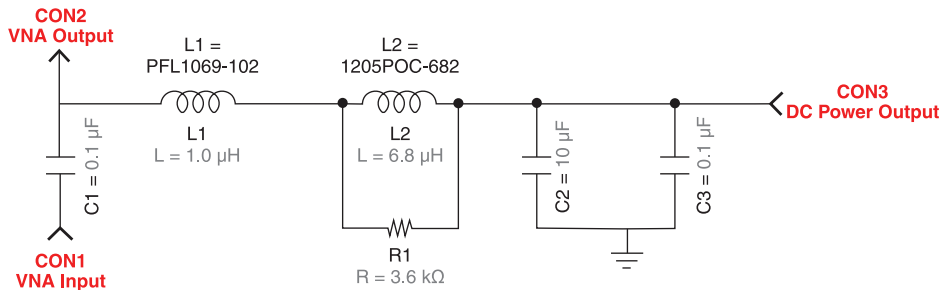


PoC Filter Solution – SMD-POC-069

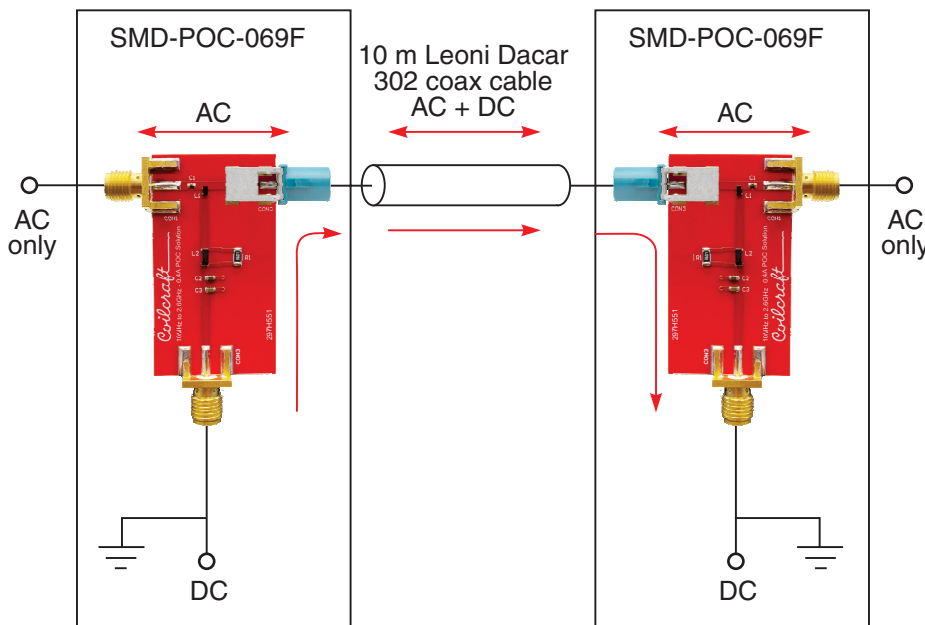
- PoC solution for 10 MHz – 5 GHz applications
- Designed specifically 4 Gbps & 6 Gbps chipsets
- Less than 6.5 mm² of board space with 2.4 mm maximum height
- 125°C ambient applications: 450 mA
- 105°C ambient applications: 500 mA
- 85°C ambient applications: 600 mA

Inductors	DCR max. (Ohms)	Max. Area (mm ²)	Isat (A) 30%				Irms (A)			
			25°C	85°C	105°C	125°C	25°C	85°C	105°C	125°C
PFL1609-102 (1.0 µH)	0.23	1.93	0.85	0.83	0.64	0.48	0.76	0.59	0.53	0.47
1205POC-682 (6.8 µH)	0.51	4.48	0.88	0.80	0.61	0.46	0.67	0.64	0.58	0.52
Totals:	0.74	6.41								

Schematic



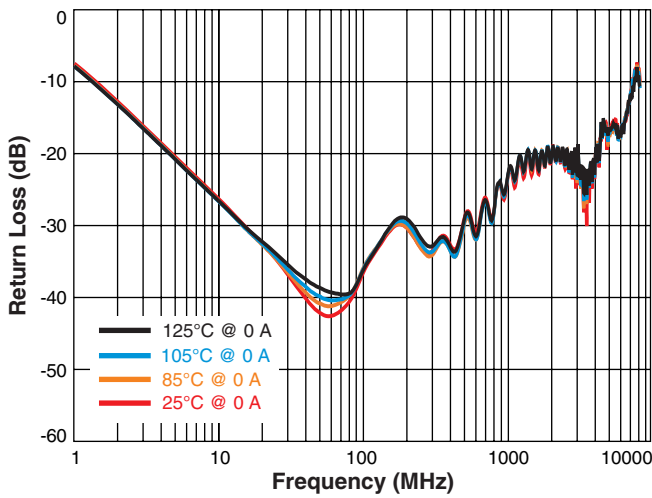
Total Channel Test Setup



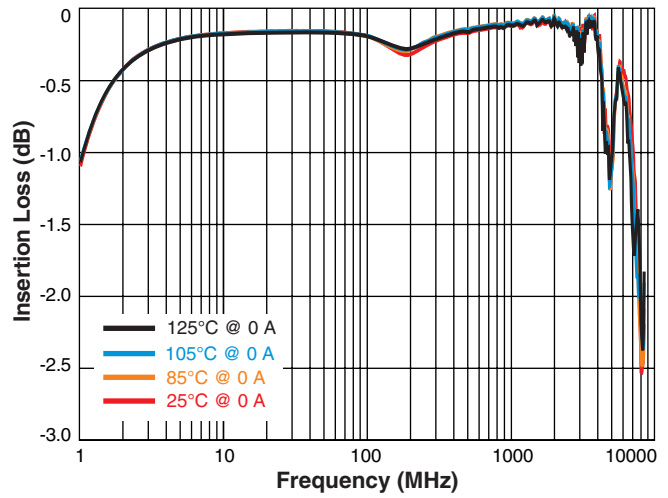
* Solutions measured in a total channel configuration. 2 PCB's with PoC filters on each with a 10 m Leoni Dacar 302 cable interconnect.

PoC Filter Solution – SMD-POC-069

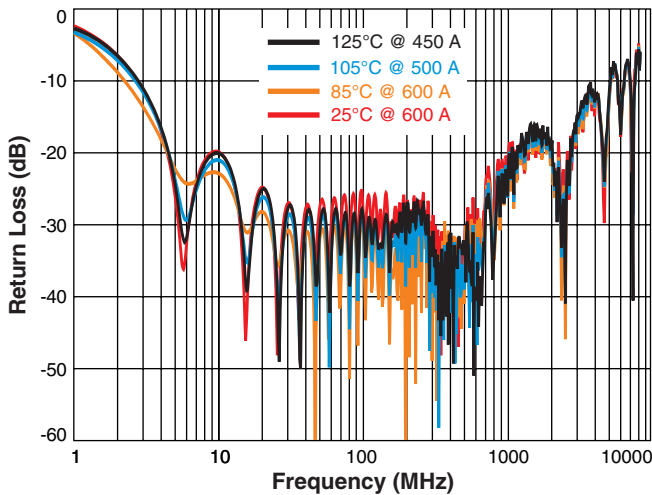
Return Loss (S11, Single board no current)



Insertion Loss (S21, Single board no current)



Return Loss (S11, Total Channel Measurements*)



Insertion Loss (S21, Total Channel Measurements*)

