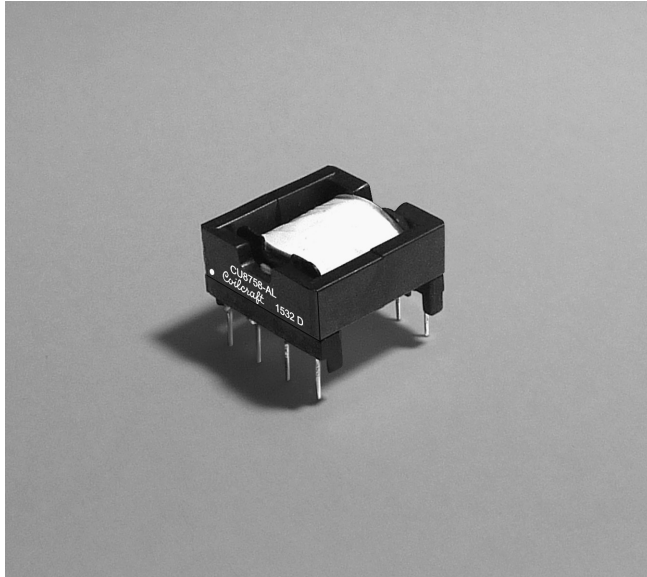


NEW!

Flyback Transformer

For Maxim MAX17597
Flyback Configuration



- Mounted on Maxim MAX17597 Evaluation Kit
- 18 V – 36 V primary input
- 24 V, 0.833 A output
- 1500 Vrms, one minute isolation between primary and secondary

Core material Ferrite

Terminations RoHS tin-silver-copper (96.5/3.0/0.5) over tin over phos bronze. Other terminations available at additional cost.

Weight 13.4 g

Ambient temperature –40°C to +125°C

Maximum part temperature 135°C (ambient + temp rise)

Storage temperature Component: –40°C to +125°C.

Tray packaging: –40°C to +80°C

Resistance to soldering heat Max three 40 second reflows at +260°C, parts cooled to room temperature between cycles

Moisture Sensitivity Level (MSL) 1 (unlimited floor life at <30°C / 85% relative humidity)

Failures in Time (FIT) / Mean Time Between Failures (MTBF)

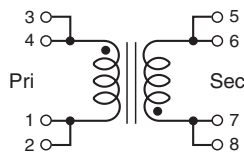
38 per billion hours / 26,315,789 hours, calculated per Telcordia SR-332

Packaging 100 parts per tray

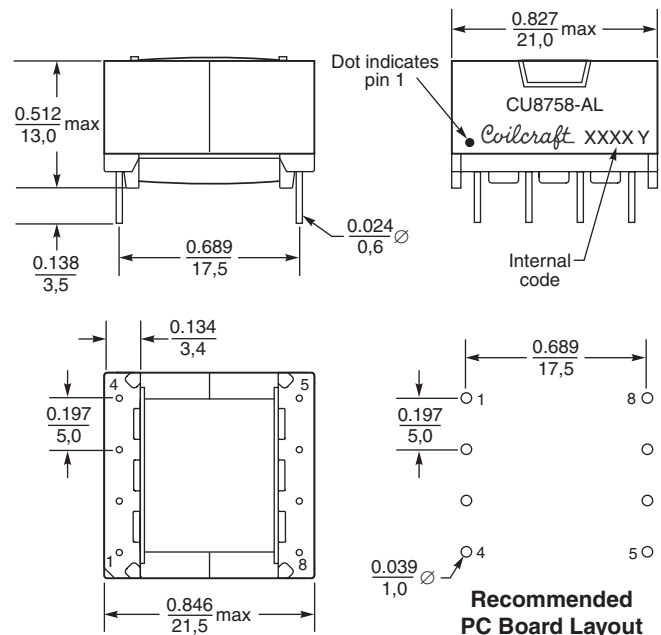
PCB washing Tested to MIL-STD-202 Method 215 plus an additional aqueous wash. See [Doc787 PCB Washing.pdf](#).

Part number	Inductance at 0 Adc ¹ ±10% (µH)	Inductance at Ipk ² min (mH)	DCR max (Ohms)		Leakage Inductance ³ max (µH)	Turns ratio pri : sec	Ipk ² (A)	Output
			pri	sec				
CU8758-AL	33	26	0.03	0.041	0.8	1 : 1.85	3.3	24 V, 0.833 A

1. Inductance is for the primary, measured at 200 kHz, 0.1 Vrms.
2. Peak primary current drawn at minimum input voltage.
3. Leakage inductance is for the primary winding with the secondary winding shorted.
4. Electrical specifications at 25°C.



The following pins to be connected on the PC board:
Pins 1 – 2
Pins 3 – 4
Pins 5 – 6
Pins 7 – 8



Dimensions are in $\frac{\text{inches}}{\text{mm}}$



www.coilcraft.com

US +1-847-639-6400 sales@coilcraft.com
UK +44-1236-730595 sales@coilcraft-europe.com
Taiwan +886-2-2264 3646 sales@coilcraft.com.tw
China +86-21-6218 8074 sales@coilcraft.com.cn
Singapore + 65-6484 8412 sales@coilcraft.com.sg

Document 1298 Revised 06/06/16

© Coilcraft Inc. 2016

This product may not be used in medical or high risk applications without prior Coilcraft approval. Specification subject to change without notice. Please check web site for latest information.