

SPICE Model – 0603AF

This lumped-element (SPICE) model data simulates the frequency-dependent behavior of Coilcraft RF inductors within the frequency range shown in the accompanying table for each individual inductor.

The data represents de-embedded measurements, as described below. Effects due to different customer circuit board traces, board materials, ground planes or interactions with other components are not included and can have a significant effect when comparing the simulation to measurements of the inductors using other production verification instruments and fixtures.

Lumped Element Modeling Method

Measurements were made using a 50 Ohm impedance analyzer. Fixture compensation was performed to remove fixture effects. No DC bias current was applied in any of the measurements.

Measurements were also taken on a network analyzer over a brass ground plane with the component centered over an air gap with a width of 0.060 inch (1.524 mm), as illustrated in Figure 1. The test pads were 30 mil (50 Ohm) wide traces of tinned gold over 25 mil thick alumina, and were not included in the gap. The TRL* calibration plane is also illustrated in Figure 1.

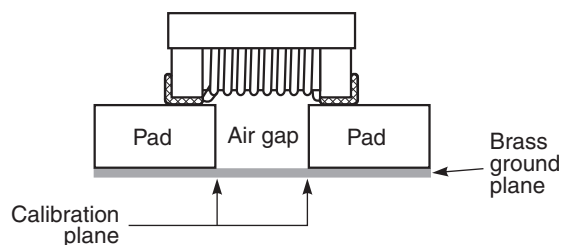
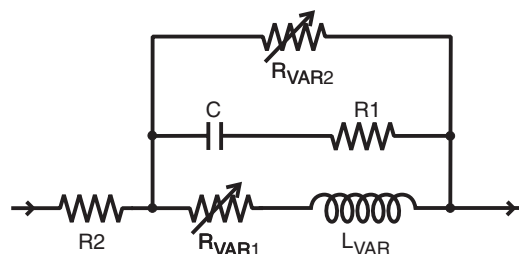


Figure 1. Test Setup

The lumped element values were determined by optimizing the simulation model to an average of the measurements. This method results in a model that represents as closely as possible the typical frequency-dependent behavior of the component within the model frequency range.

The equivalent lumped element model schematic is shown below. Each model should only be analyzed at the input and output ports. Individual elements of the model are not determined by parameter measurement. The elements are determined by the overall performance of the lumped element model compared to the measurements taken of the component.



The value of the frequency-dependent variable resistor R_{VAR1} is calculated from:

$$R_{VAR1} = k1 * \sqrt{f}$$

- k1 is shown for each value in the accompanying table.
- f is the frequency in Hz
- R_{VAR1} is the resistance in Ohms

The value of the frequency-dependent variable resistor R_{VAR2} is calculated from:

$$R_{VAR2} = k2 * \sqrt{f}$$

- k2 is shown for each value in the accompanying table.
- f is the frequency in Hz
- R_{VAR2} is the resistance in Ohms

The value of the frequency-dependent inductance L_{VAR} is calculated from:

$$L_{VAR} = k3 - k4 * \text{LOG}(k5 * f)$$

- k3, k4, and k5 are shown in the accompanying table.
- f is the frequency in Hz
- L_{VAR} is the inductance in μH
- LOG is the natural LOG (basee)

Disclaimer

Coilcraft makes every attempt to provide accurate measurement data and software, representative of our components, in a usable format. Coilcraft, however, disclaims all warrants relating to the use of its data and software, whether expressed or implied, including without limitation any implied warranties of merchantability or fitness for a particular purpose. Coilcraft cannot and will not be liable for any special, incidental, consequential, indirect or similar damages occurring with the use of the data and/or software.

SPICE Model for Coilcraft 0603AF RF Inductors

Part number	Frequency limit of model (MHz)		R1 (Ω)	R2 (Ω)	C (pF)	k1	k2	L_{VAR} Coefficients		
	Lower	Upper						k3	k4	k5
0603AF-15N	1	2000	270	0.023	0.345	5.00E-06	0.011	0.02	3.60E-04	1.00E-01
0603AF-33N	1	2000	370	0.028	0.132	4.00E-05	0.02	0.043	7.10E-04	1.00E-01
0603AF-39N	1	2000	220	0.115	0.120	1.00E-06	0.022	0.049	7.10E-04	1.00E-01
0603AF-47N	1	2000	300	0.052	0.089	1.00E-06	0.021	0.062	1.07E-03	1.00E-01
0603AF-68N	1	2000	130	0.15	0.140	1.00E-06	0.042	0.085	1.27E-03	1.00E-01
0603AF-72N	1	2000	180	0.065	0.133	8.00E-05	0.050	0.091	1.40E-03	1.00E-01
0603AF-111	1	2000	75	0.06	0.101	2.00E-05	0.061	0.147	2.68E-03	1.00E-01
0603AF-121	1	2000	80	0.089	0.116	1.00E-05	0.064	0.159	2.86E-03	1.00E-01
0603AF-151	1	2000	85	0.093	0.089	3.00E-05	0.077	0.220	5.15E-03	1.00E-01
0603AF-201	1	1600	30	0.115	0.103	3.00E-05	0.110	0.290	6.57E-03	1.00E-01
0603AF-241	1	1600	25	0.12	0.089	3.00E-05	0.128	0.356	8.54E-03	1.00E-01
0603AF-271	1	1500	35	0.22	0.096	1.00E-05	0.142	0.388	8.64E-03	1.00E-01
0603AF-361	1	1200	35	0.21	0.117	1.00E-05	0.170	0.482	8.64E-03	1.00E-01
0603AF-391	1	1200	160	0.30	0.087	2.00E-04	0.255	0.564	1.30E-02	1.00E-01
0603AF-421	1	1200	35	0.33	0.106	1.00E-05	0.200	0.540	8.64E-03	1.00E-01
0603AF-471	1	1200	40	0.37	0.096	4.00E-05	0.268	0.661	1.40E-02	1.00E-01
0603AF-561	1	1000	15	0.49	0.099	4.00E-05	0.34	0.778	1.60E-02	1.00E-01
0603AF-681	1	1000	10	0.46	0.082	9.00E-05	0.36	0.980	2.20E-02	1.00E-01
0603AF-821	1	500	10	0.58	0.326	1.30E-04	0.42	1.215	2.90E-02	1.00E-01
0603AF-102	1	800	10	0.84	0.085	6.00E-05	0.55	1.368	2.70E-02	1.00E-01
0603AF-152	1	800	10	1.3	0.103	6.00E-05	0.80	1.870	2.70E-02	1.00E-01
0603AF-222	1	150	10	1.1	1.67	1.50E-04	0.87	2.932	5.50E-02	1.00E-01
0603AF-472	1	100	14	1.5	2.97	6.50E-04	1.7	6.093	1.13E-01	1.00E-01
0603AF-103	1	80	35	4.5	1.76	1.50E-03	4.8	14.442	3.60E-01	1.00E-01



www.coilcraft.com

US +1-847-639-6400 sales@coilcraft.com
UK +44-1236-730595 sales@coilcraft-europe.com
Taiwan +886-2-2264 3646 sales@coilcraft.com.tw
China +86-21-6218 8074 sales@coilcraft.com.cn
Singapore + 65-6484 8412 sales@coilcraft.com.sg

Document 558-4 Revised 03/26/16

© Coilcraft Inc. 2016
 This product may not be used in medical or high risk applications without prior Coilcraft approval. Specification subject to change without notice. Please check web site for latest information.