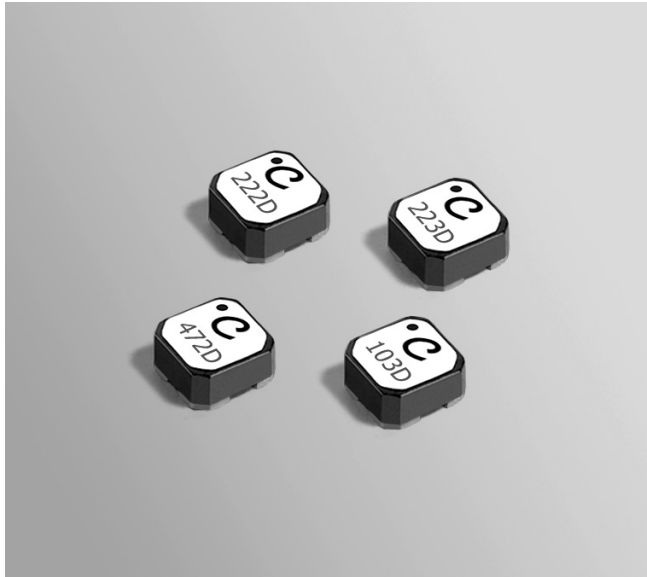


# Common Mode Chokes – LPD3015



- Only 1.4 mm high and 3 mm square
- Ideal for use in both power line and signal line applications
- Common- and differential-mode filtering in a single device
- Up to 540 MHz differential mode cutoff frequency
- Can be used as coupled inductors for SEPIC applications

**Core material** Ferrite

**Weight** 45 – 52 mg

**Environmental** RoHS compliant, halogen free

**Terminations** RoHS compliant matte tin over nickel over silver. Other terminations available at additional cost.

**Ambient temperature** -40°C to +85°C with (40°C rise) Irms current.

**Maximum part temperature** +125°C (ambient + temp rise).

**Storage temperature** Component: -40°C to +125°C.

Tape and reel packaging: -40°C to +80°C

**Winding to winding isolation** 100 Vrms, one minute

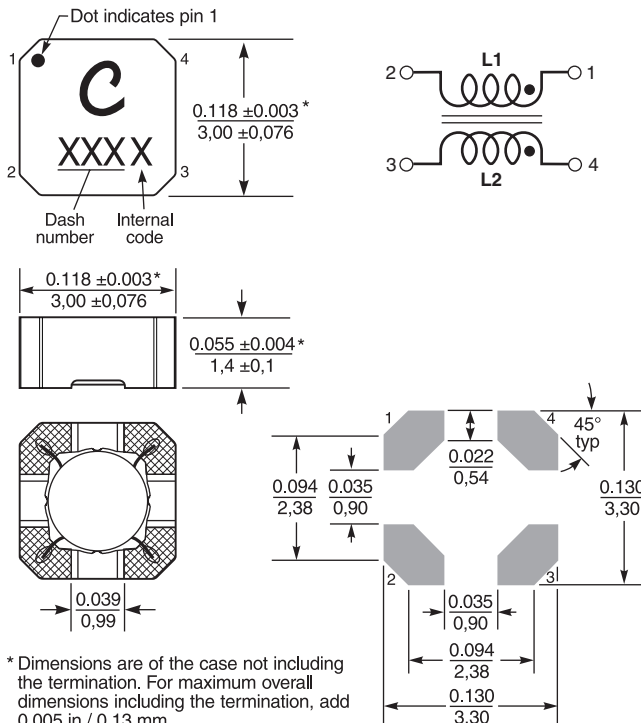
**Resistance to soldering heat** Max three 40 second reflows at +260°C, parts cooled to room temperature between cycles

**Moisture Sensitivity Level (MSL)** 1 (unlimited floor life at <30°C / 85% relative humidity)

**Packaging** 1000/7" reel; 3500/13" reel Plastic tape: 12 mm wide, 0.26 mm thick, 8 mm pocket spacing, 1.65 mm pocket depth

**Recommended pick and place nozzle** OD: 3 mm; ID: ≤ 1.5 mm

**PCB washing** Tested to MIL-STD-202 Method 215 plus an additional aqueous wash. See [Doc787\\_PCB\\_Washing.pdf](#).



Dimensions are in  $\frac{\text{inches}}{\text{mm}}$

For optional tin-lead and tin-silver-copper terminations, dimensions are for the mounted part. Dimensions before mounting can be an additional 0.005 in / 0.13 mm.



# Common Mode Chokes – LPD3015 Series

Partnumber <sup>1</sup>	Common mode impedance max (kOhms)	Cutoff frequency <sup>2</sup> (MHz)	Inductance (μH) <sup>3</sup>		DCR max <sup>4</sup> (Ohms)	Isolation (Vrms)	Irms (A)
			min	nom			
LPD3015-391MR_	1.03 @ 330 MHz	540	0.312	0.39	0.071	100	1.45
LPD3015-561MR_	1.44 @ 240 MHz	540	0.448	0.56	0.079	100	1.37
LPD3015-102MR_	2.43 @ 160 MHz	330	0.800	1.0	0.129	100	1.08
LPD3015-152MR_	3.56 @ 130 MHz	330	1.20	1.5	0.204	100	0.86
LPD3015-182MR_	4.37 @ 110 MHz	280	1.44	1.8	0.273	100	0.78
LPD3015-222MR_	4.67 @ 100 MHz	330	1.76	2.2	0.300	100	0.75
LPD3015-332MR_	7.28 @ 81 MHz	220	2.64	3.3	0.337	100	0.67
LPD3015-472MR_	10.7 @ 66 MHz	210	3.76	4.7	0.503	100	0.54
LPD3015-682MR_	12.1 @ 54 MHz	290	5.44	6.8	0.622	100	0.49
LPD3015-103MR_	17.8 @ 47 MHz	330	8.00	10	1.040	100	0.38
LPD3015-153MR_	22.6 @ 33 MHz	140	12.0	15	1.420	100	0.32
LPD3015-183MR_	29.0 @ 31 MHz	94	14.4	18	1.550	100	0.31
LPD3015-223MR_	27.3 @ 24 MHz	88	17.6	22	1.89	100	0.28
LPD3015-333MR_	41.1 @ 21 MHz	59	26.4	33	2.84	100	0.23
LPD3015-473MR_	48.7 @ 18 MHz	50	37.6	47	4.03	100	0.19
LPD3015-683MR_	64.5 @ 14 MHz	48	54.4	68	6.11	100	0.16
LPD3015-104MR_	94.7 @ 13 MHz	47	80.0	100	8.54	100	0.13
LPD3015-124MR_	116 @ 11 MHz	37	96.0	120	9.23	100	0.13
LPD3015-154MR_	135 @ 9.3 MHz	27	120	150	12.40	100	0.11
LPD3015-184MR_	170 @ 8.0 MHz	39	144	180	15.32	100	0.10
LPD3015-224MR_	155 @ 7.1 MHz	27	176	220	18.56	100	0.09
LPD3015-334MR_	222 @ 5.9 MHz	16	264	330	27.70	100	0.07

1. When ordering, please specify **termination** and **packaging** codes:

## LPD3015-334MRC

**Termination:** **R** = Matte tin over nickel over silver  
Special order, added cost:

**Q** = RoHS tin-silver-copper (95.5/4/0.5) or

**P** = non-RoHS tin-lead (63/37)

**Packaging:** **C** = 7" machine-ready reel. EIA-481 embossed plastic tape (1000 parts per full reel). Quantities less than full reel available: in tape (not machine ready) or with leader and trailer (\$25 charge).

**D** = 13" machine-ready reel. EIA-481 embossed plastic tape. Factory order only, not stocked (3500 parts per full reel).

**B** = Less than full reel. In an effort to simplify our part numbering system, Coilcraft is eliminating the need for multiple packaging codes. When ordering, simply change the last letter of your part number from B to C.

2 Frequency at which the differential mode attenuation equals 3 dB

3 Inductance shown for each winding, measured at 100 kHz, 0.1 Vrms, 0 Adc on an Agilent/HP 4284A LCR meter or equivalent.

4 DCR is for each winding.

5 Interwinding isolation (hipot) tested for one minute.

6 Current that causes a 40°C temperature rise from 25°C ambient. This information is for reference only and does not represent absolute maximum ratings.

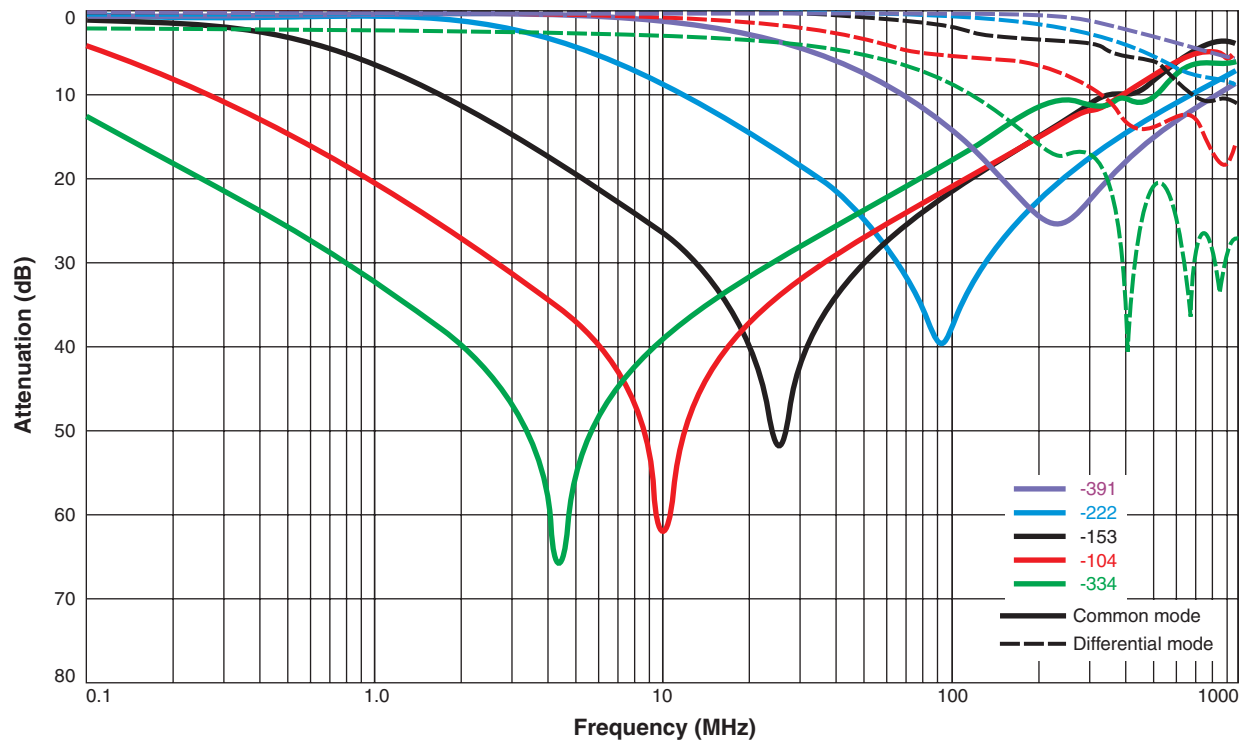
7. Electrical specifications at 25°C.

Refer to Doc 362 "Soldering Surface Mount Components" before soldering.

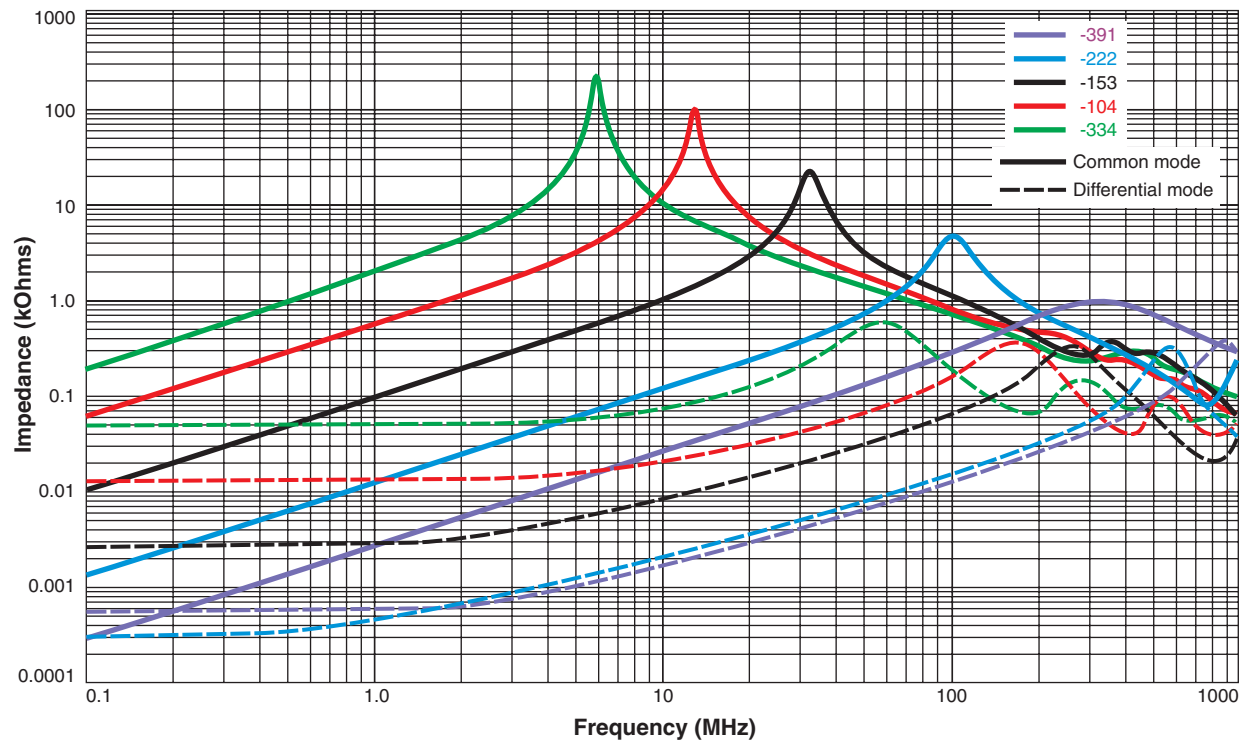


# Common Mode Chokes – LPD3015 Series

Typical Attenuation (Ref: 50 Ohms)



Typical Impedance vs Frequency



**US** +1-847-639-6400 sales@coilcraft.com  
**UK** +44-1236-730595 sales@coilcraft-europe.com  
**Taiwan** +886-2-2264 3646 sales@coilcraft.com.tw  
**China** +86-21-6218 8074 sales@coilcraft.com.cn  
**Singapore** + 65-6484 8412 sales@coilcraft.com.sg

Document 1324-3 Revised 05/22/21

© Coilcraft Inc. 2021

This product may not be used in medical or high risk applications without prior Coilcraft approval. Specification subject to change without notice. Please check web site for latest information.