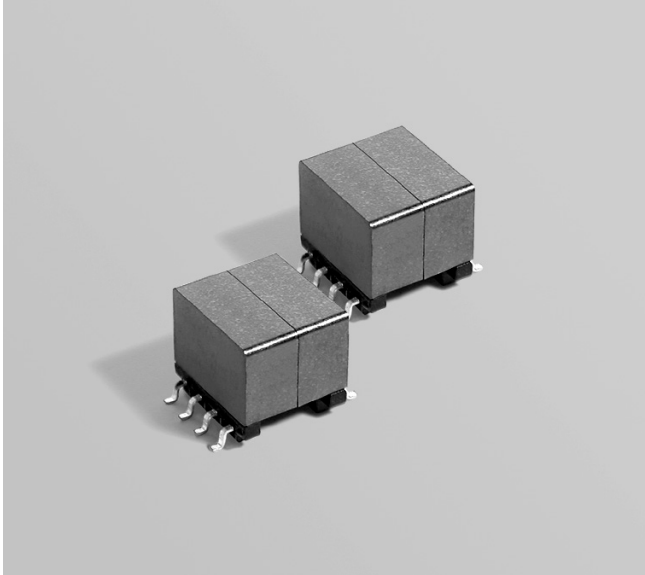




# Flyback Transformer

For Linear Technology LT3573  
Isolated Flyback Converter



- Designed for the LT3573 Isolated Flyback Converter
- 1500 Vrms isolation from primary and bias to secondary; 500 Vrms isolation from primary to bias, tested for one minute
- The bias winding provides power to the chipset

**Core material** Ferrite

**Terminations** RoHS tin-silver over tin over nickel over phos bronze. Other terminations available at additional cost.

**Weight** 3.9 to 4.1 g

**Ambient temperature** -40°C to +85°C

**Storage temperature** Component: -40°C to +85°C  
Tape and reel packaging: -40°C to +80°C

**Resistance to soldering heat** Max three 40 second reflows at +260°C, parts cooled to room temperature between cycles

**Moisture Sensitivity Level (MSL)** 1 (unlimited floor life at <30°C / 85% relative humidity)

**Failures in Time (FIT) / Mean Time Between Failures (MTBF)**

38 per billion hours / 26,315,789 hours, calculated per Telcordia SR-332

**Packaging** 250 per 13" reel Plastic tape: 32 mm wide, 0.5 mm thick, 20 mm pocket spacing, 11.2 mm pocket depth

**PCB washing** Tested with pure water or alcohol only. For other solvents, see Doc787\_PCB\_Washing.pdf

Part number <sup>1</sup>	Inductance at 0 A <sup>2</sup> ±10% (µH)	Inductance at Ipk <sup>3</sup> min (µH)	DCR max (mOhms) <sup>4</sup>			Leakage inductance max (µH) <sup>5</sup>	Turns ratio <sup>6</sup> pri : sec : bias	Ipk <sup>3</sup> (A)	Input voltage (V)	Output <sup>7</sup>
			pri	sec	bias					
GA3429-BL_	24.0	21.6	95	7.5	123	0.566	4 : 1 : 1	2.1	20 – 28	3.3 V, 1.5 A

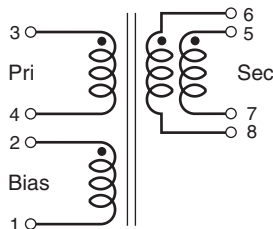
1. When ordering, please specify **packaging** code:

**GA3429-BLD**

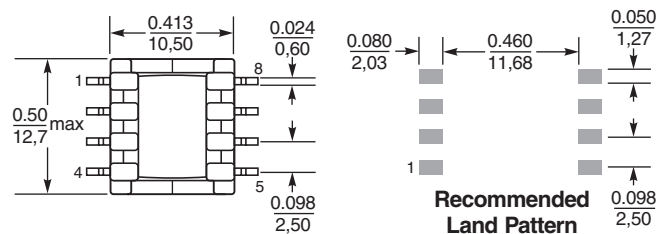
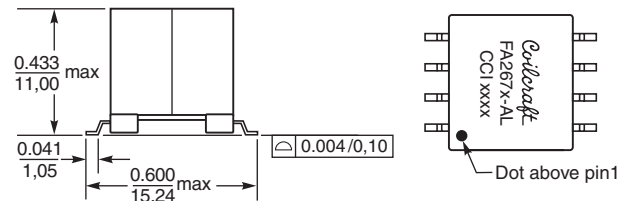
**Packaging:** D = 13" machine-ready reel. EIA-481 embossed plastic tape (250 parts per full reel).

B = Less than full reel. In tape, but not machine ready. To have a leader and trailer added (\$25 charge), use code letter D instead.

- Inductance is for the primary, measured at 250 kHz, 0.3 Vrms, 0 Adc.
  - Ipk is peak primary current drawn at minimum input voltage.
  - DCR for the secondary is per winding.
  - Leakage inductance measured between pins 3 and 4 with all secondary pins shorted.
  - Turns ratio is with the secondary windings connected in parallel.
  - Output is with the secondary windings connected in parallel. Bias winding output: 3.3 V, 20 mA.
  - Electrical specifications at 25°C.
- Refer to Doc 362 "Soldering Surface Mount Components" before soldering.



Secondary windings to be connected in parallel on PCB



Dimensions are in inches/mm

**Recommended Land Pattern**



www.coilcraft.com

**US** +1-847-639-6400 sales@coilcraft.com  
**UK** +44-1236-730595 sales@coilcraft-europe.com  
**Taiwan** +886-2-2264 3646 sales@coilcraft.com.tw  
**China** +86-21-6218 8074 sales@coilcraft.com.cn  
**Singapore** +65-6484 8412 sales@coilcraft.com.sg

Document 733 Revised 05/04/09

© Coilcraft Inc. 2013

This product may not be used in medical or high risk applications without prior Coilcraft approval. Specification subject to change without notice. Please check web site for latest information.