



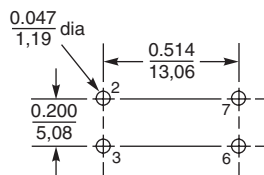
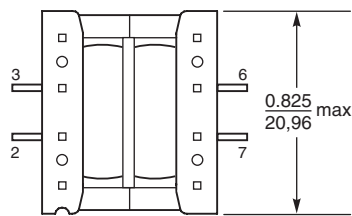
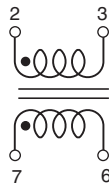
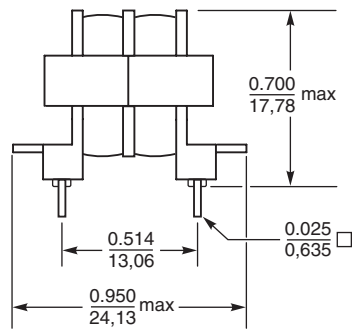
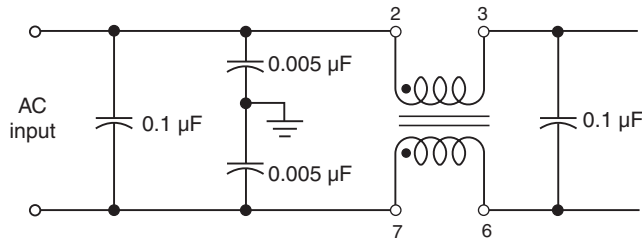
# Common Mode Choke - G6252-AL

- Low cost, high performance choke coil
- Designed to reduce AC line conducted common mode noise produced by switching power supplies.
- UL1446 Class B (130°C) Insulation System (UL File E83628)

Part number	Common mode impedance max (kOhms)	Inductance <sup>1</sup> min (mH)	Current rating <sup>2</sup> (mA)	DCR max <sup>3</sup> (Ohms)	Isolation <sup>4</sup> (Vrms)
GA6252-AL	700.8 @ 0.21 MHz	10.5	300	2.1	2500

1. Inductance is per winding; measured at 1.0 Vrms, 15.75 kHz.
2. Based on 300 circular mils/Amp. Temperature rise is less than 10°C.
3. DCR is maximum per winding.
4. Isolation (hipot) measured for one minute
5. Operating temperature range -40°C to +85°C.
6. Electrical specifications at 25°C.

## Typical Application

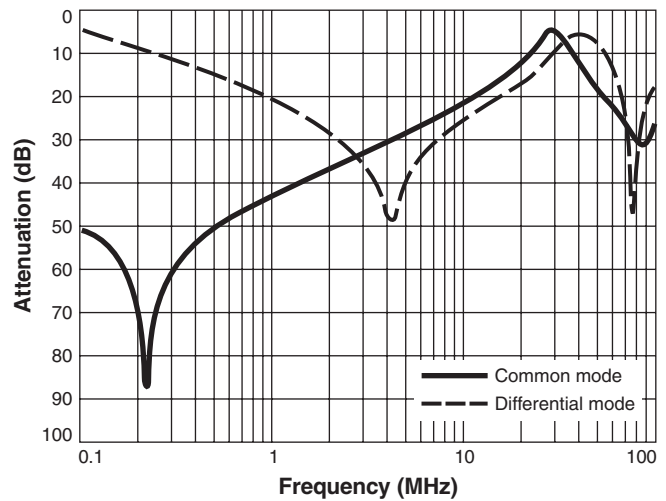


Recommended Board Layout

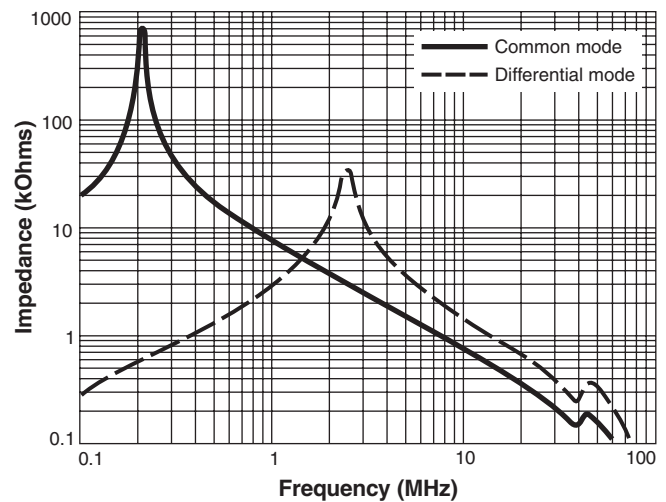
Bottom View

Weight 9.5 g  
Packaging 49 per tray

## Typical Attenuation (Ref: 50 Ohms)



## Typical Impedance vs Frequency



US +1-847-639-6400 sales@coilcraft.com  
 UK +44-1236-730595 sales@coilcraft-europe.com  
 Taiwan +886-2-2264 3646 sales@coilcraft.com.tw  
 China +86-21-6218 8074 sales@coilcraft.com.cn  
 Singapore +65-6484 8412 sales@coilcraft.com.sg

Document 410 Revised 08/10/16

© Coilcraft Inc. 2017

This product may not be used in medical or high risk applications without prior Coilcraft approval. Specification subject to change without notice. Please check web site for latest information.