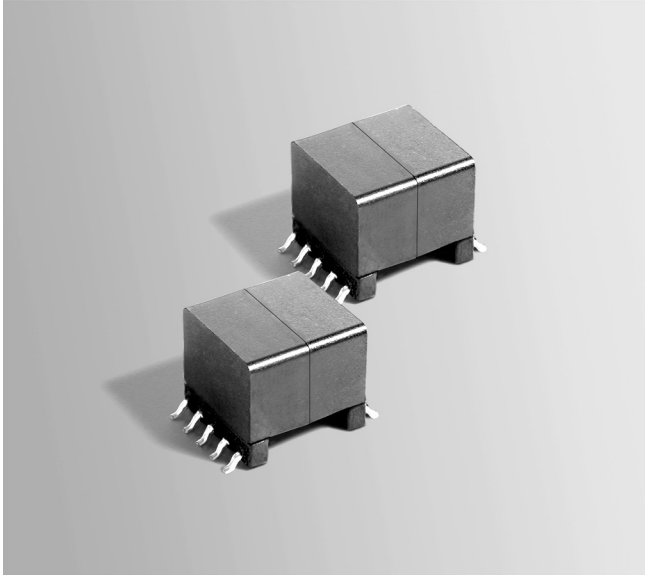




Flyback Transformers

For Silicon Laboratories
Si3402 PD Controllers



- Designed for Power over Ethernet PD controllers for applications up to 15 Watts.
- Operates in continuous conduction mode with 36 – 72 V input
- 1500 Vrms, one minute isolation between primary and secondary

Core material Ferrite

Terminations RoHS tin-silver over tin over nickel over phos bronze. Other terminations available at additional cost.

Weight 6.57 – 6.71 g

Ambient temperature –40°C to +85°C

Storage temperature Component: –40°C to +85°C.

Tape and reel packaging: –40°C to +80°C

Resistance to soldering heat Max three 40 second reflows at +260°C, parts cooled to room temperature between cycles

Moisture Sensitivity Level (MSL) 1 (unlimited floor life at <30°C / 85% relative humidity)

Failures in Time (FIT) / Mean Time Between Failures (MTBF)

38 per billion hours / 26,315,789 hours, calculated per Telcordia SR-332

Packaging 175 per 13" reel Plastic tape: 32 mm wide, 0.5 mm thick, 28 mm pocket spacing, 12.93 mm pocket depth

PCB washing Tested to MIL-STD-202 Method 215 plus an additional aqueous wash. See [Doc787_PCB_Washing.pdf](#).

Part number ¹	Power (W)	Inductance at 0 A ² ±10% (µH)	Inductance at Ipk ³ min (µH)	DCR max (Ohms) ⁴		Leakage inductance ⁵ max (µH)	Turns ratio ⁶ pri : sec	Ipk ³ (A)	Output ⁷
				pri	sec				
FA2924-AL_	15	40.0	36.0	0.100	0.025	0.666	1 : 0.3	2.0	3.3 V, 4.5 A
FA2805-CL_	15	40.0	36.0	0.108	0.040	0.621	1 : 0.4	2.0	5.0 V, 3.0 A
FA2925-AL_	15	40.0	36.0	0.100	0.155	0.566	1 : 1	2.0	12.0 V, 1.25 A

1. When ordering, please specify **packaging** code:

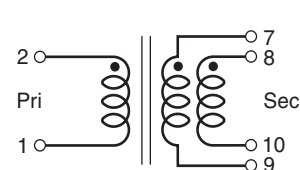
FA2925-ALD

Packaging: D = 13" machine-ready reel. EIA-481 embossed plastic tape (175 parts per full reel).

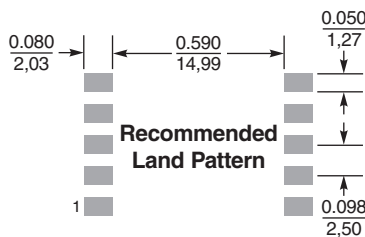
B = Less than full reel. In tape, but not machine ready. To have a leader and trailer added (\$25 charge), use code letter D instead.

- Inductance is for the primary, measured at 200 kHz, 0.2 Vrms, 0 Adc.
- Ipk is peak primary current drawn at minimum input voltage.
- DCR for the secondary is per winding.
- Leakage inductance measured between pins 1 and 2 with all secondary pins shorted.
- Turns ratio is with the secondary windings connected in parallel.
- Output is with the secondary windings connected in parallel.
- Electrical specifications at 25°C.

Refer to Doc 362 "Soldering Surface Mount Components" before soldering.



Secondary windings to be connected in parallel on PCB board



Dimensions are in inches / mm

