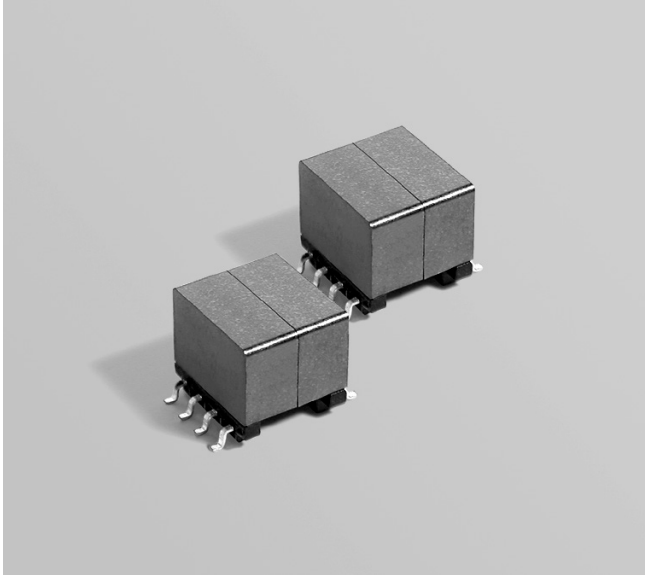


Flyback Transformers

For Silicon Laboratories
Si3402 PD Controller



- Designed for Power over Ethernet PD controllers for applications up to 10 Watts.
- Operates in continuous conduction mode with 36 – 72 V input
- 1500 Vrms, one minute isolation between primary and secondary

Core material Ferrite

Terminations RoHS tin-silver over tin over nickel over phos bronze. Other terminations available at additional cost.

Weight 3.8 – 3.9 g

Ambient temperature –40°C to +85°C

Storage temperature Component: –40°C to +85°C.

Tape and reel packaging: –40°C to +80°C

Maximum part temperature +125°C (ambient + temp rise)

Resistance to soldering heat Max three 40 second reflows at +260°C, parts cooled to room temperature between cycles

Moisture Sensitivity Level (MSL) 1 (unlimited floor life at <30°C / 85% relative humidity)

Failures in Time (FIT) / Mean Time Between Failures (MTBF)

38 per billion hours / 26,315,789 hours, calculated per Telcordia SR-332

Packaging 200 per 13" reel Plastic tape: 32 mm wide, 0.5 mm thick, 24 mm pocket spacing, 11.2 mm pocket depth

PCB washing Tested to MIL-STD-202 Method 215 plus an additional aqueous wash. See [Doc787_PCB_Washing.pdf](#).

| Part number ¹ | Power (W) | Inductance at 0 A ² ±10% (µH) | Inductance at I _{pk} ³ min (µH) | DCR max (Ohms) ⁴ | | Leakage inductance max (µH) ⁵ | Turns ratio ⁶ pri : sec | I _{pk} ³ (A) | Output |
|--------------------------|-----------|--|---|-----------------------------|-------|--|------------------------------------|----------------------------------|----------------|
| | | | | pri | sec | | | | |
| FA2671-AL_ | 10 | 40.0 | 36.0 | 0.098 | 0.023 | 0.395 | 1 : 0.3 | 1.3 | 3.3 V, 3.0 A |
| FA2672-AL_ | 10 | 40.0 | 36.0 | 0.098 | 0.045 | 0.340 | 1 : 0.4 | 1.3 | 5.0 V, 2.0 A |
| FA2732-AL_ | 10 | 40.0 | 36.0 | 0.098 | 0.156 | 0.370 | 1 : 1 | 1.3 | 12.0 V, 0.83 A |

1. When ordering, please specify **packaging** code:

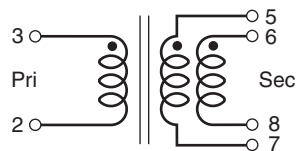
FA2672-ALD

Packaging: D = 13" machine-ready reel. EIA-481 embossed plastic tape (200 parts per full reel).

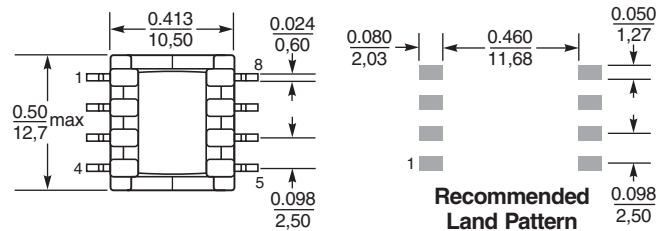
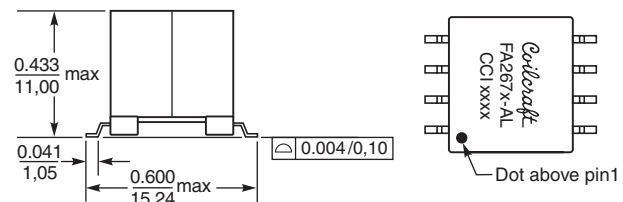
B = Less than full reel. In tape, but not machine ready. To have a leader and trailer added (\$25 charge), use code letter D instead.

- Inductance is for the primary, measured at 400 kHz, 0.4 Vrms, 0 Adc.
- I_{pk} is peak primary current drawn at minimum input voltage.
- DCR for the secondary is per winding.
- Leakage inductance measured between pins 2 and 3 with all secondary pins shorted.
- Turns ratio is with the secondary windings connected in parallel.
- Output is with the secondary windings connected in parallel.
- Electrical specifications at 25°C.

Refer to Doc 362 "Soldering Surface Mount Components" before soldering.



Secondary windings to be connected in parallel on PCB board



Dimensions are in $\frac{\text{inches}}{\text{mm}}$