

SPICE Model – XAL50xx

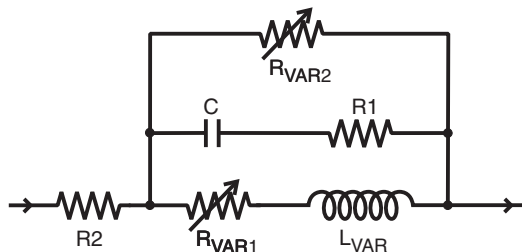
This lumped-element (SPICE) model data simulates the frequency-dependent behavior of Coilcraft power inductors within the frequency range shown in the accompanying table for each individual inductor.

The data represents de-embedded measurements, as described below. Effects due to different customer circuit board traces, board materials, ground planes or interactions with other components are not included and can have a significant effect when comparing the simulation to measurements of the inductors using other production verification instruments and fixtures.

Lumped Element Modeling Method

Measurements were made using a 50 Ohm impedance analyzer. Fixture compensation was performed to remove fixture effects. No DC bias current was applied in any of the measurements. The lumped element values were determined by optimizing the simulation model to an average of the measurements. This method results in a model that represents as closely as possible the typical frequency-dependent behavior of the component within the model frequency range.

The equivalent lumped element model schematic is shown below. Each model should only be analyzed at the input and output ports. Individual elements of the model are not determined by parameter measurement. The elements are determined by the overall performance of the lumped element model compared to the measurements taken of the component.



The value of the frequency-dependent variable resistor R_{VAR1} is calculated from:

$$R_{VAR1} = k1 \times \sqrt{f}$$

- $k1$ is shown for each value in the accompanying table.
- f is the frequency in Hz
- R_{VAR1} is the resistance in Ohms

The value of the frequency-dependent variable resistor R_{VAR2} is calculated from:

$$R_{VAR2} = k2 \times \sqrt{f}$$

- $k2$ is shown for each value in the accompanying table.
- f is the frequency in Hz
- R_{VAR2} is the resistance in Ohms

Note: The log function in the following equation is the natural logarithm, base e , not base 10.

The value of the frequency-dependent inductance L_{VAR} is calculated from:

$$L_{VAR} = k3 - k4 \times \text{LOG}(k5 \times f)$$

- $k3$, $k4$, and $k5$ are shown in the accompanying table.
- f is the frequency in Hz
- L_{VAR} is the inductance in μH
- LOG is the natural LOG (base e)

Disclaimer

Coilcraft makes every attempt to provide accurate measurement data and software, representative of our components, in a usable format. Coilcraft, however, disclaims all warrants relating to the use of its data and software, whether expressed or implied, including without limitation any implied warranties of merchantability or fitness for a particular purpose. Coilcraft cannot and will not be liable for any special, incidental, consequential, indirect or similar damages occurring with the use of the data and/or software.

SPICE Model for XAL50xx Power Inductors

Part number	Frequency limit of model (MHz)		R1 (Ω)	R2 (Ω)	C (pF)	k1	k2	L _{VAR} Coefficients		
	Lower	Upper						k3	k4	k5
XAL5030-161	0.1	300	5	0.00215	4.3	5.00E-05	0.016	0.16	1.00E-03	5.00E-06
XAL5030-331	0.1	300	10	0.00320	8.7	2.50E-05	0.038	0.33	7.50E-04	6.00E-06
XAL5030-601	0.1	200	10	0.00411	6.9	5.00E-05	0.059	0.60	5.00E-04	1.00E-06
XAL5030-801	0.1	200	10	0.00514	8.5	1.00E-04	0.092	0.80	2.00E-03	4.00E-06
XAL5030-102	0.1	200	10	0.00850	7.6	1.00E-04	0.11	1.0	5.00E-03	6.00E-06
XAL5030-122	0.1	150	7	0.0114	10.3	1.00E-04	0.390	1.2	1.00E-06	1.00E-06
XAL5030-222	0.1	100	50	0.0132	11.2	9.00E-05	0.55	2.2	1.60E-02	9.00E-06
XAL5030-332	0.1	100	5	0.0212	4.6	1.20E-04	0.77	3.3	4.00E-03	7.00E-06
XAL5030-472	0.1	200	5	0.0327	2.7	7.50E-05	1.14	4.7	9.00E-03	9.00E-06
XAL5050-562	0.1	100	5	0.02345	4.6	3.00E-04	1.5	5.6	9.00E-03	8.00E-06
XAL5050-682	0.1	90	5	0.02675	7.6	9.00E-04	2.0	6.8	5.00E-03	3.00E-06
XAL5050-822	0.1	100	15	0.03175	8.9	2.50E-05	0.91	8.2	8.00E-03	7.00E-06
XAL5050-103	0.1	100	15	0.04090	8.9	2.50E-05	1.2	10	9.00E-03	7.00E-06
XAL5050-153	0.1	60	15	0.06970	10	2.50E-05	1.9	15	1.00E-03	6.00E-07
XAL5050-223	0.1	80	6	0.09060	8.2	2.00E-03	6.5	22	5.00E-01	9.75E-06



www.coilcraft.com

US +1-847-639-6400 sales@coilcraft.com
UK +44-1236-730595 sales@coilcraft-europe.com
Taiwan +886-2-2264 3646 sales@coilcraft.com.tw
China +86-21-6218 8074 sales@coilcraft.com.cn
Singapore + 65-6484 8412 sales@coilcraft.com.sg

Document 267-2 Revised 12/14/22

© Coilcraft Inc. 2022

This product may not be used in medical or high
 risk applications without prior Coilcraft approval.
 Specification subject to change without notice.
 Please check web site for latest information.