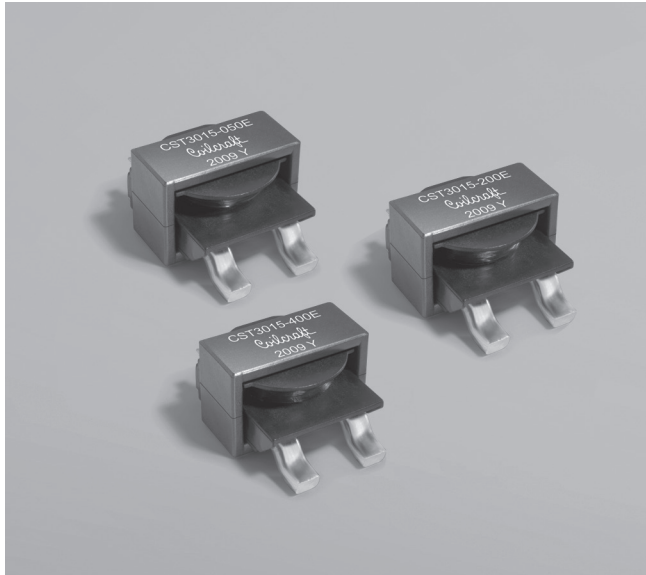




Current Sense Transformers CST3015



- Designed for up to 1 MHz and above
- Sensed current is 80 A and higher
- Very low primary DC resistance
- 5000 Vrms, one minute isolation (hipot) between windings.
- Designed to meet reinforced insulation, at least 8 mm creep-age/clearance
- AEC-Q200 Grade 1 (−40°C to +125°C)

Core material Ferrite

Environment RoHS compliant, halogen free

Terminations RoHS compliant tin-silver-copper over copper (pins 1 – 2); RoHS compliant tin-silver-copper over matte tin over nickel over phos bronze (pins 3 – 4)

Weight 16.6 – 16.9 g

Ambient temperature −40°C to +125°C

Maximum part temperature +165°C (ambient + temp rise)

Storage temperature Component: −40°C to +165°C.

Tape and reel packaging: −40°C to +80°C

Resistance to soldering heat Max three 40 second reflows at +260°C, parts cooled to room temperature between cycles

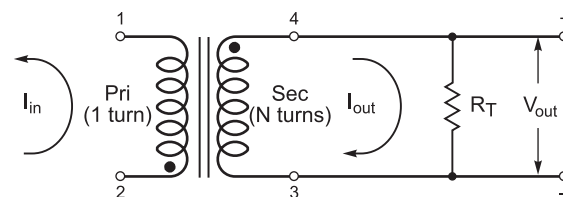
Moisture Sensitivity Level (MSL) 1 (unlimited floor life at <30°C / 85% relative humidity)

PCB washing Tested to MIL-STD-202 Method 215 plus an additional aqueous wash. See [Doc787_PCB_Washing.pdf](#).

Part number ¹	Turns	Inductance ² nom ±25% (mH)	DCR (Ohms)		Frequency range ³ (kHz)	Volt-time product ⁴ (V-µsec)	Sensed current I_{in} ⁵ (A)	Terminating resistance R_T ⁶ (Ohms)
	(N) pri:sec		Pri max	Sec max				
CST3015-050ED	1:50	0.80	0.0001	0.44	1.57 - >1000	319	80	0.5
CST3015-100ED	1:100	3.20	0.0001	1.54	0.78 - >1000	638	88	1
CST3015-200ED	1:200	12.80	0.0001	5.94	0.39 - >1000	1276	87	2
CST3015-300ED	1:300	28.80	0.0001	13.78	0.26 - >1000	1914	84	3
CST3015-400ED	1:400	51.20	0.0001	24.41	0.20 - >1000	2553	83	4

- Termination:** E = RoHS compliant tin-silver-copper over copper (pins 1 – 2); RoHS compliant tin-silver-copper over matte tin over nickel over phos bronze (pins 3 – 4)
Packaging: D = 13" machine-ready reel. EIA-481 embossed plastic tape (90 parts per full reel). Quantities less than full reel available: in tape (not machine ready) or with leader and trailer (\$25 charge).
 - Inductance measured between secondary pins at 1 kHz, 0.1 Vrms.
 - For specific questions regarding frequency range, please contact us at cst@coilcraft.com.
 - Volt-time product is for the secondary, between pin 4 and 3.
 - Primary current that causes approximately 40°C temperature rise from 25°C ambient. Higher current causes a greater temperature rise (see Temperature Rise vs Current curve).
This information is for reference only and does not represent absolute maximum ratings.
 - Terminating resistance (R_T) value is based on 1 Volt output with 100 Amps flowing through the primary. Varying terminating resistance increases or decreases output Voltage/Ampere according to the following equation: $R_T \text{ (Ohms)} = V_{out} \times N_{sec}/I_{in}$.
 - Electrical specifications at 25°C.
- Refer to Doc 362 "Soldering Surface Mount Components" before soldering.

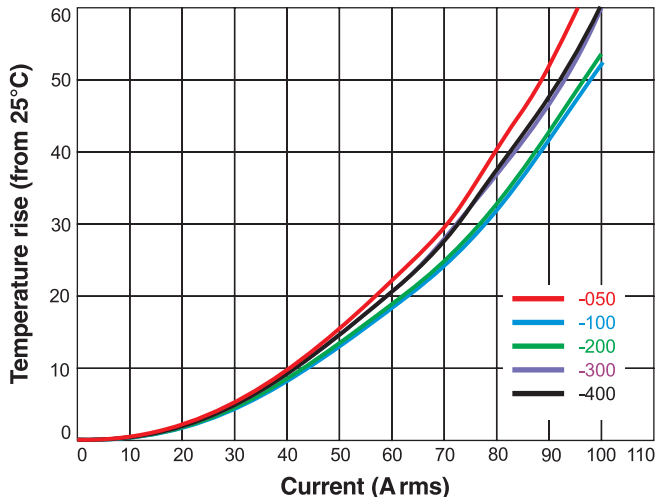
Typical Circuits



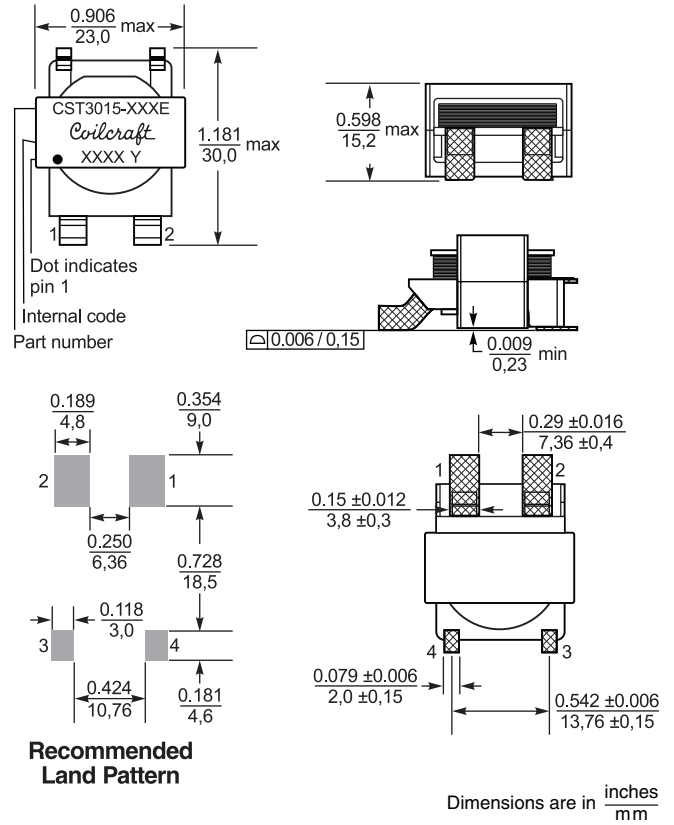


CST3015 Series Current Sense Transformers

Temperature Rise vs Current



Dimensions



Recommended Land Pattern

Packaging 90/13" reel; Plastic tape: 56 mm wide, 0.5 mm thick, 36 mm pocket spacing, 16 mm pocket depth



US +1-847-639-6400 sales@coilcraft.com
UK +44-1236-730595 sales@coilcraft-europe.com
Taiwan +886-2-2264 3646 sales@coilcraft.com.tw
China +86-21-6218 8074 sales@coilcraft.com.cn
Singapore + 65-6484 8412 sales@coilcraft.com.sg

Document 1608-2 Revised 06/15/21
 © Coilcraft Inc. 2023
 This product may not be used in medical or high risk applications without prior Coilcraft approval. Specification subject to change without notice. Please check web site for latest information.