

SPICE Model—0805LS

This lumped-element (SPICE) model data simulates the frequency-dependent behavior of Coilcraft ferrite surface mount inductors within the frequency range shown in the accompanying table.

The equivalent lumped element model schematic is shown below. The element values R1, R2, C, L, k1 and k2 are listed in the table for each component value. The value of the frequency-dependent variable resistor R_{VAR1} relates to the skin effect and is calculated from:

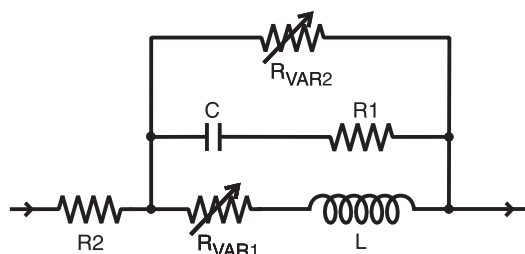
$$R_{VAR1} = k1 * \sqrt{f}$$

- k1 is shown for each value in the accompanying table.
- f is the frequency in Hz

The value of the frequency-dependent variable resistor R_{VAR2} relates to core losses and is calculated from:

$$R_{VAR2} = k2 * \sqrt{f}$$

- k2 is shown for each value in the accompanying table.
- f is the frequency in Hz



The data represents de-embedded measurements, as described below. Effects due to different customer circuit board traces, board materials, ground planes or interactions with other components are not included and can have a significant effect when comparing the simulation to measurements of the inductors using typical production verification instruments and fixtures.

Each model should only be analyzed at the input and output ports. Individual elements of the model are not determined by parameter measurement. The elements are determined by the overall performance of the lumped element model compared to the measurements taken of the component.

Typically, the Self-Resonant Frequency (SRF) of the component model will be higher than the measurement of the component mounted on a circuit board. The parasitic reactive elements of a circuit board or fixture will effectively lower the circuit resonant frequency, especially for very small inductance values. Since data sheet specifications are based on typical production measurements, and the SPICE models are based on de-embedded measurements as described below, the model results may be different from the data sheet specifications.

Lumped Element Modeling Method

Measurements were made using a 50 Ohm Agilent/HP 4291A impedance analyzer with an Agilent/HP 16193 test fixture. Calibration was performed using open/short/load/air capacitor (phase) standards. Fixture compensation was performed using open and short standards.

The lumped element values were determined by matching the simulation model to an average of the measurements. This method results in a model that represents as closely as possible the typical frequency-dependent behavior of the component within the model frequency range.

The lumped element models were used to generate our 2-port S-parameters and therefore give identical results. The S-parameters are available on our web site at <http://www.coilcraft.com/models.cfm>.

Disclaimer

Coilcraft makes every attempt to provide accurate measurement data and software, representative of our components, in a usable format. Coilcraft, however, disclaims all warrants relating to the use of its data and software, whether expressed or implied, including without limitation any implied warranties of merchantability or fitness for a particular purpose. Coilcraft cannot and will not be liable for any special, incidental, consequential, indirect or similar damages occurring with the use of the data and/or software.

SPICE Model for Coilcraft 0805LS RF Inductors

Part number	Frequency limit of model (MHz)		R1	R2	C (pF)	L (μ H)	k1	k2
	Lower	Upper						
0805LS-78N	3	500	2010	0.0785	2.08	0.0762	0.00E+00	6.53E-02
0805LS-111	3	500	1590	0.142	8.53	0.108	1.29E-05	1.14E-01
0805LS-471	1	240	3370	0.292	0.062	0.465	2.52E-05	3.05E-01
0805LS-681	1	200	3440	0.459	0.170	0.677	9.99E-06	4.80E-01
0805LS-102	1	150	9680	0.724	0.142	1.00	8.40E-06	6.82E-01
0805LS-122	1	100	10000	1.20	0.145	1.20	1.50E-05	1.10E+00
0805LS-152	1	100	19000	0.902	0.149	1.55	1.10E-05	1.19E+00
0805LS-182	1	90	20200	1.21	0.166	1.79	1.45E-05	1.39E+00
0805LS-222	1	90	380	1.28	0.656	2.20	1.11E-06	1.49E+00
0805LS-272	1	75	650	1.41	0.511	2.70	1.17E-06	1.76E+00
0805LS-332	1	65	305	1.69	0.792	3.35	1.59E-06	2.11E+00
0805LS-392	1	45	161	1.77	1.51	3.90	2.26E-07	2.48E+00
0805LS-472	1	40	198	1.95	1.39	4.70	1.88E-07	2.87E+00
0805LS-682	1	30	144	2.47	2.49	6.62	1.90E-07	3.96E+00
0805LS-822	1	22	158	2.80	4.12	8.20	2.03E-07	4.66E+00
0805LS-103	1	17	142	3.89	4.43	9.90	2.21E-07	5.89E+00
0805LS-153	1	13	150	6.13	4.15	14.8	5.20E-07	9.23E+00
0805LS-223	1	9	156	7.69	4.41	21.6	4.01E-07	1.29E+01
0805LS-273	1	9	117	11.9	5.53	26.7	7.31E-07	1.45E+01



www.coilcraft.com

US +1-847-639-6400 sales@coilcraft.com
UK +44-1236-730595 sales@coilcraft-europe.com
Taiwan +886-2-2264 3646 sales@coilcraft.com.tw
China +86-21-6218 8074 sales@coilcraft.com.cn
Singapore + 65-6484 8412 sales@coilcraft.com.sg

Document 298-3 Revised 05/09/16

© Coilcraft Inc. 2016

This product may not be used in medical or high risk applications without prior Coilcraft approval. Specification subject to change without notice. Please check web site for latest information.